

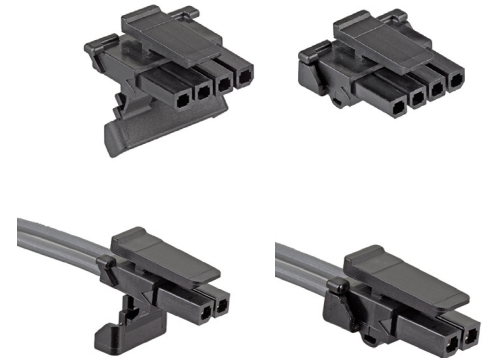
Micro-Fit* TPA Receptacle, Single and Dual Row



Micro-Fit* TPA Receptacles ensure proper mating and prevent accidental back-outs, with the single-row version delivering a one-piece solution and the double-row a two-piece retainer

Features and Benefits

Terminal position assurance (TPA) with integrated secondary lock	Eliminates terminal back-outs resulting from improper assembly
Compatible with all existing Micro-Fit* 3.0 headers and plugs	Enables customers to implement running change to incorporate the TPA design. Removes the need to change both sides of the interface or to make significant revisions or investments in their applications.
Single-row receptacle incorporates a 1-piece housing and terminal lock design	No secondary pieces, reducing SKUs
Single- and Dual-Row, wire-to-wire and wire-to-board configurations immediately available in multiple circuit sizes	Provides wide-range of design flexibility, and supports rapid implementation
Fully polarized housings	Assures proper mating orientation. Compatible with existing headers and plugs
Utilizes all existing Micro-Fit* 3.0 crimp terminals	Removes the need for additional investments in new application tooling
Fully isolated contacts on each side of the interface	Prevent potential arcing



Micro-Fit* TPA Single-Row Receptacle



Micro-Fit* TPA Dual-Row Receptacle

Applications

Consumer / Home Appliance

- Harness Manufacturers
- Appliances

Data / Computing

- Harness Manufacturers
- Desktops
- Workstations
- Power Supplies
- Uninterruptible Power Supply (UPS)

Telecommunications / Networking

- Harness Manufacturers
- Servers
- Routers
- Switches

Automotive / Commercial Vehicle

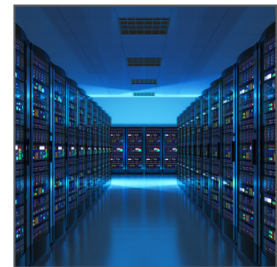
- Harness Manufacturers
- Non-Sealed Applications
- Inside Devices



Workstation



Home Appliances



Servers

Micro-Fit* TPA Receptacle, Single and Dual Row



Specifications

REFERENCE INFORMATION

Packaging:
 UL File No.: E29179
 CSA File No.: LR19980
 Mates With: Micro-Fit* 3.0 Single-Row Plug (Series 43640) and Header (Series 43650)
 Mates With: Micro-Fit* 3.0 Dual-Row Plug Housing (Series 43020) and Header (Series 43045 and 44914)
 Terminal Used: Micro-Fit* 3.0 female crimp terminals (Series 43030, 46235)
 Designed In: Millimeters
 RoHS: Yes
 Halogen Free: Yes
 Glow Wire Compliant: Option Available, Contact Molex

ELECTRICAL

Voltage (max.): 600V
 Current (max.): 5.0 to 10.0A (Please see product specifications; determined by terminal used)
 Contact Resistance (max.): 10 milliohms
 Dielectric Withstanding Voltage: <5mV
 Insulation Resistance (min.): 1,000 Megohms

MECHANICAL

Contact Insertion Force (max.): 14.7N
 Contact Retention to Housing (min.): 24.5N
 Mating Force (max.): 8N per circuit
 Unmating Force (min.): 3.7N per circuit
 Durability (max.): 30 cycles

PHYSICAL

Housing: Nylon
 Contact: Various
 (Phosphor Bronze, Copper Alloy – see Product Specifications for Particular Connector System)
 Operating Temperature: -40 to +105°C

Ordering Information

Series No.	Rows	Component	Configuration	Circuits
171850	Single	Receptacle	Wire-to-Wire, Wire-to-Board	2 to 7
172952	Dual			4 to 14
172953		TPA	2 Parts per Receptacle; Same Part Number	4 to 24 (See Table Below for Additional Receptacle Circuit Sizes)

Series No.	Rows	Component	Configuration	Circuits
Contact Molex	Single	Receptacle	Wire-to-Wire, Wire-to-Board	8 to 12
	Dual			16 to 24

Mates with Micro-Fit* 3.0 Plugs and Headers

Series No.	Configuration	Component	Circuits
43640	Single	Plug Housing	2 to 12
43650	Single	Header	2 to 12
43020	Dual	Right-Angle and Vertical Header	4 to 24
43045	Dual	Plug Housing	4 to 16
44914	Dual	CPI Header	4 to 24

Uses Micro-Fit* 3.0 Female Crimp Terminals

Series No.	Wire Size (AWG)	Plating Option
43030	20 to 30	Gold or Tin
46235	20 to 30	Gold

*Micro-Fit is a trademark of Molex, LLC in the United States and may be registered in certain jurisdictions.

www.molex.com/link/microfit30.html