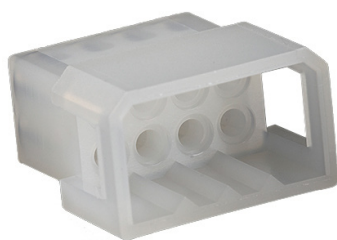
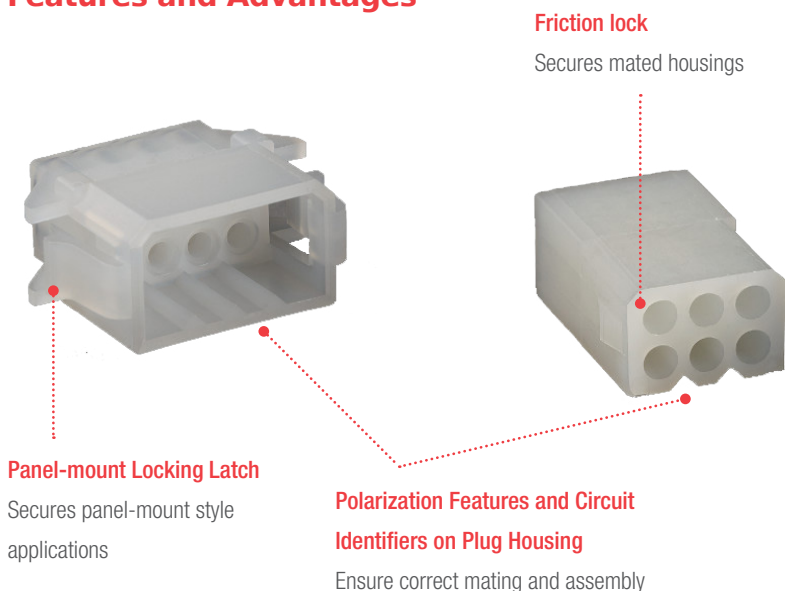


EconoLatch® Wire-to-Wire Connectors

molex®

Supporting up to 9.0A of current per circuit, EconoLatch® connectors allow quick swapping of wired terminals for disruption-free operations in consumer, automotive and industrial applications

Features and Advantages



Receptacle Housing without Panel-mount Locking Latch

Applications

Consumer / Home Appliance

Refrigerators, Washers, Dryers

Lighting

Interior Lighting, Fixtures, Ballasts

Industrial

Assembly line equipment

Medical

Healthcare IT, Patient-care equipment

Automotive

Interior lighting



Dual Terminal Locking Lances

Provide optimum contact stability when inserted into the connector housing; dimples within the terminals enhance contact reliability and electrical performance when mated



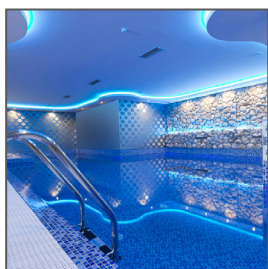
Circular Crimp Terminal Design

Allow orientation in any direction for quick insertion and wire-to-wire assembly



Split-beam terminal design with 2 points of contact

Offers redundant, secondary current paths for long-term performance and reliability



Interior Lighting for Buildings and Cars



Assembly Line Equipment



Consumer and Home Appliance

Specifications

REFERENCE INFORMATION

Packaging: Bag
 UL File No.: E29179
 Mates With: 150176/150177 with 150178/150179
 Use With: UL 1061 / UL 1007 wires
 Terminal Used: 150180/150181
 Designed In: Millimeters
 RoHS: Yes
 Halogen Free: No
 Glow Wire Compliant: No

ELECTRICAL

Voltage (max.): 250V
 Current (max.): 11A
 Contact Resistance: 10 milliohms max initial
 Dielectric Withstanding Voltage: 1500V AC
 Insulation Resistance: 500V DC

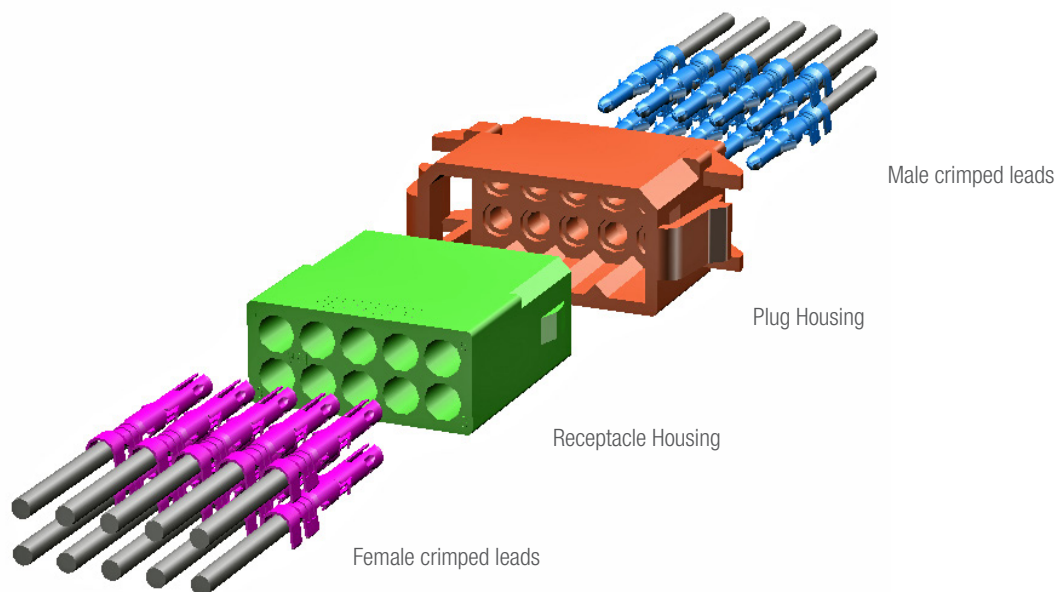
PHYSICAL

Housing: PA66, Natural
 Contact: Copper Alloy
 Plating:
 Contact Area — Tin
 Operating Temperature: -40 to 105°C

MECHANICAL

Contact Insertion Force (max.): 11N
 Contact Retention to Housing (min.):
 60N (150180); 25N (150181).
 Mating Force (max.): 9N per circuit
 Unmating Force (min.): 4.5N per circuit
 Durability (max.): 25 cycles

Mating Configuration



Exploded view of 10-circuit EconoLatch® Wire-to-Wire Connector Assembly from Plug Housing perspective

Ordering Information

Series No.	Component	Configuration	Circuit / Wire sizes
150176	Plug Housing	Single-row (with or without panel-mount latches)	1, 2 and 3
150177	Plug Housing	Dual-row (with or without panel-mount latches)	4, 6, 8 and 10
150178	Receptacle Housing	Single-row	1, 2 and 3
150179	Receptacle Housing	Dual-row	4, 6, 8 and 10
150180	Crimp Terminal	Male	16 to 22 AWG
150181	Crimp Terminal	Female	16 to 22 AWG